



CLEVE HILL SOLAR PARK

OTHER DEADLINE 3 SUBMISSIONS FURTHER ADDITIONAL CULTURAL HERITAGE VISUALISATIONS

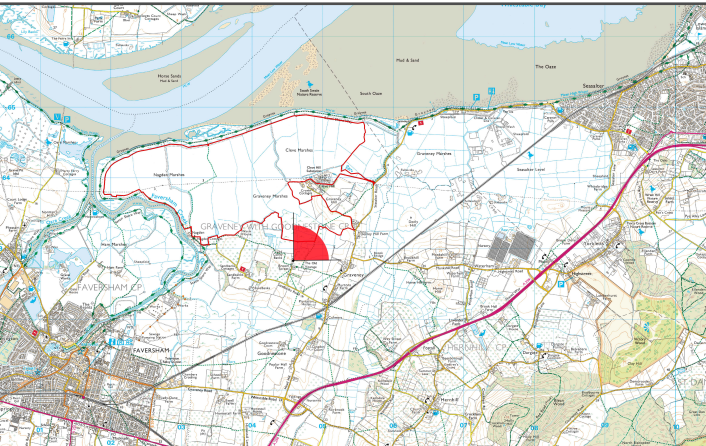
August 2019
Revision A

Document Reference: 11.4.8
Submitted: Deadline 3

www.clevehillsolar.com



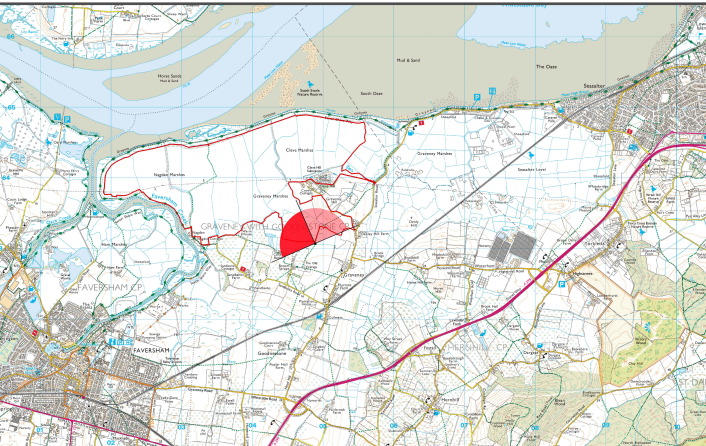
CLEVE HILL
SOLAR PARK



OS reference:	605479 12864	Horizontal field of view:	90°	Camera:	Nikon D3
Approximate AOD:	5m AOD	Principal distance:	500mm	Lens:	50mm f1.8D
Direction of view:	46.8°	Paper size:	841 x 297 mm	Camera height:	1.6m
Distance to CLSA:	253m	Correct printed image size:	820 x 170 mm	Date and time:	07/02/2018 13:01

"CLSA" - Core Landscape Study Area

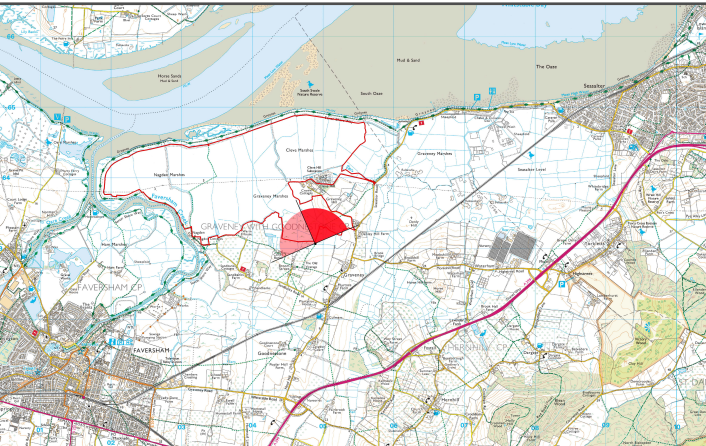




OS reference:	604880 163053	Horizontal field of view:	90°	Camera:	Nikon D3
Approximate AOD:	4m AOD	Principal distance:	500mm	Lens:	50mm f1.8D
Direction of view:	290°	Paper size:	841 x 297 mm	Camera height:	1.6m
Distance to CLSA:	50m	Correct printed image size:	820 x 170 mm	Date and time:	21/06/2018 13:20

"CLSA" - Core Landscape Study Area





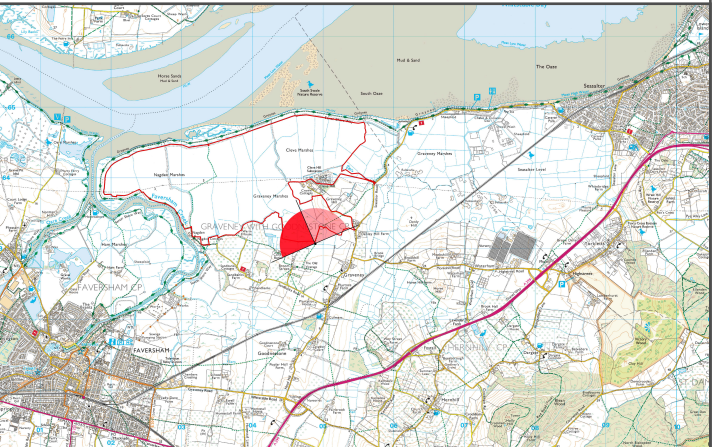
OS reference: 604880 163053
Approximate AOD: 4m AOD
Direction of view: 20°
Distance to CLSA: 50m

Horizontal field of view: 90°
Principal distance: 500mm
Paper size: 841 x 297 mm
Correct printed image size: 820 x 170 mm

Camera: Nikon D3
Lens: 50mm f1.8D
Camera height: 1.6m
Date and time: 21/06/2018 13:20

"CLSA" - Core Landscape Study Area





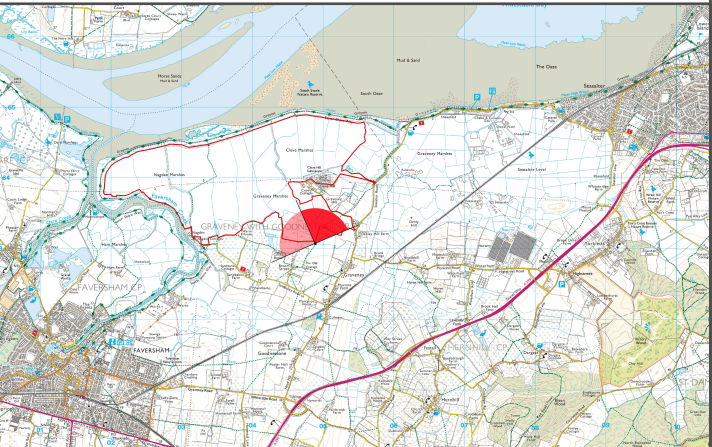
OS reference:	604880 163053	Horizontal field of view:	90°	Camera:	Nikon D3
Approximate AOD:	4m AOD	Principal distance:	500mm	Lens:	50mm f1.8D
Direction of view:	290°	Paper size:	841 x 297 mm	Camera height:	1.6m
Distance to CLSA:	50m	Correct printed image size:	820 x 170 mm	Date and time:	07/02/2018 13:05

"CLSA" - Core Landscape Study Area



Volume 4 Technical Appendix A11.3 Cultural Heritage - **Figure: 2c**
Public Right of Way (ZR488) near southern boundary of the Core Landscape Study Area

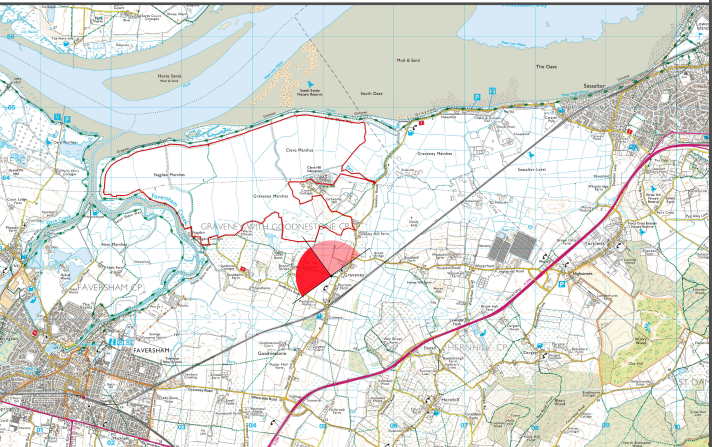
Cleve Hill Solar Park Environmental Statement



OS reference: 604880 163053
Approximate AOD: 4m AOD
Direction of view: 20°
Distance to CLSA: 50m
Horizontal field of view: 90°
Principal distance: 500mm
Paper size: 841 x 297 mm
Correct printed image size: 820 x 170 mm
Camera: Nikon D3
Lens: 50mm f1.8D
Camera height: 1.6m
Date and time: 07/02/2018 13:05
"CLSA" - Core Landscape Study Area



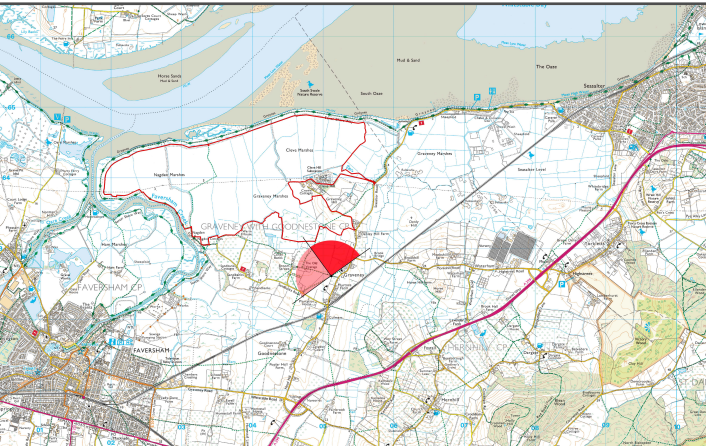
Volume 4 Technical Appendix A11.3 Cultural Heritage - **Figure: 2d**
Public Right of Way (ZR488) near southern boundary of the Core Landscape Study Area
Cleve Hill Solar Park Environmental Statement



OS reference:	605113 162622	Horizontal field of view:	90°	Camera:	Nikon D3
Approximate AOD:	11m AOD	Principal distance:	500mm	Lens:	50mm f1.8D
Direction of view:	286°	Paper size:	841 x 297 mm	Camera height:	1.6m
Distance to CLSA:	537m	Correct printed image size:	820 x 170 mm	Date and time:	18/05/2018 15:11

"CLSA" - Core Landscape Study Area

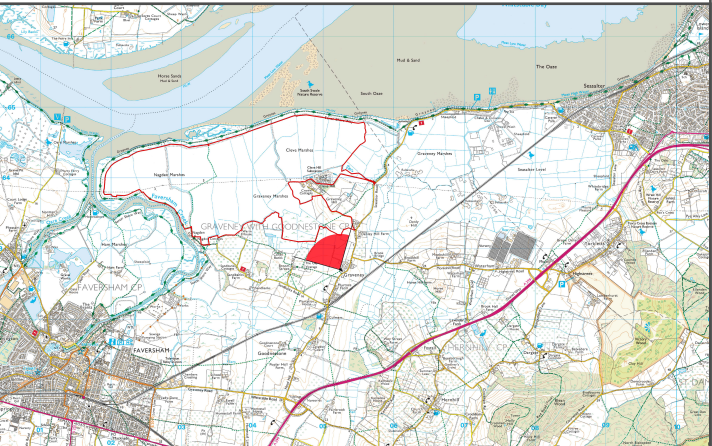




OS reference:	605113 162622	Horizontal field of view:	90°	Camera:	Nikon D3
Approximate AOD:	11m AOD	Principal distance:	500mm	Lens:	50mm f1.8D
Direction of view:	16°	Paper size:	841 x 297 mm	Camera height:	1.6m
Distance to CLSA:	537m	Correct printed image size:	820 x 170 mm	Date and time:	18/05/2018 15:11

"CLSA" - Core Landscape Study Area





OS reference:	605255 162696	Horizontal field of view:	90°	Camera:	Nikon D3
Approximate AOD:	13m AOD	Principal distance:	500mm	Lens:	50mm f1.8D
Direction of view:	329.93°	Paper size:	841 x 297 mm	Camera height:	1.6m
Distance to CLSA:	508m	Correct printed image size:	820 x 170 mm	Date and time:	07/02/2018 13:32

"CLSA" - Core Landscape Study Area



Volume 4 Technical Appendix A11.3 Cultural Heritage - **Figure: 4**
From the west side of All Saints Church

Cleve Hill Solar Park Environmental Statement

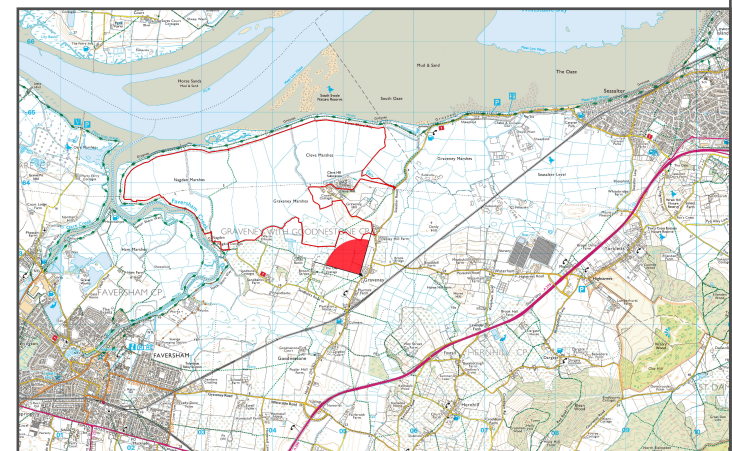


OS reference: 605245 162700
Approximate AOD: 13m AOD
Direction of view: 314.67°
Distance to CLSA: 495m

Horizontal field of view: 90°
Principal distance: 500mm
Paper size: 841 x 297 mm
Correct printed image size: 820 x 170 mm

Camera: Nikon D3
Lens: 50mm f1.8D
Camera height: 1.6m
Date and time: 24/04/2018 11:34

"CLSA" - Core Landscape Study Area



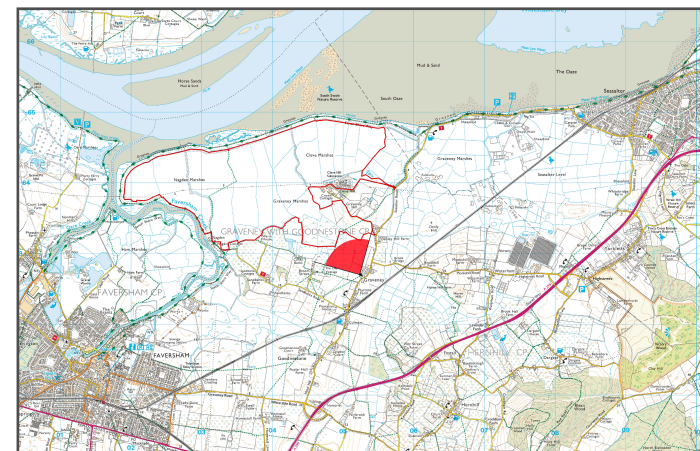


OS reference: 605245 162700
Approximate AOD: 13m AOD
Direction of view: 314.67°
Distance to CLSA: 495m

Horizontal field of view: 90°
Principal distance: 500mm
Paper size: 841 x 297 mm
Correct printed image size: 820 x 170 mm

Camera: Nikon D3
Lens: 50mm f1.8D
Camera height: 1.6m
Date and time: 07/02/2018 13:41

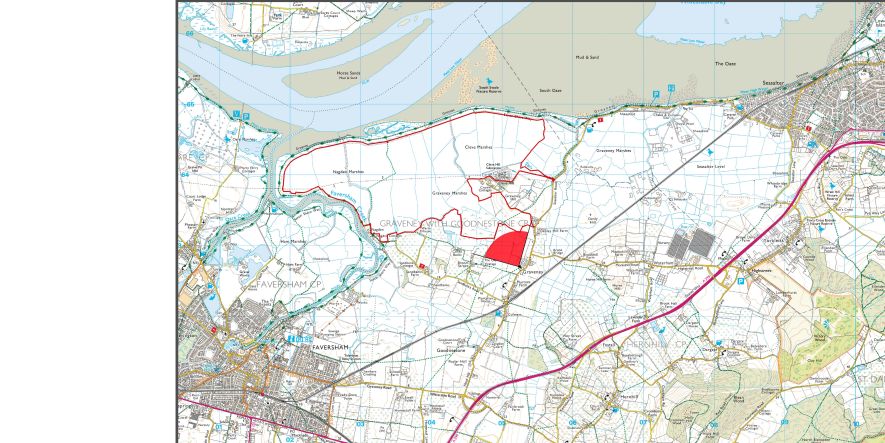
"CLSA" - Core Landscape Study Area





OS reference:	605222 162685	Horizontal field of view:	90°	Camera:	Nikon D3
Approximate AOD:	11m AOD	Principal distance:	500mm	Lens:	50mm f1.8D
Direction of view:	323.84°	Paper size:	841 x 297 mm	Camera height:	1.6m
Distance to CLSA:	425m	Correct printed image size:	820 x 170 mm	Date and time:	21/06/2018 12:51

"CLSA" - Core Landscape Study Area

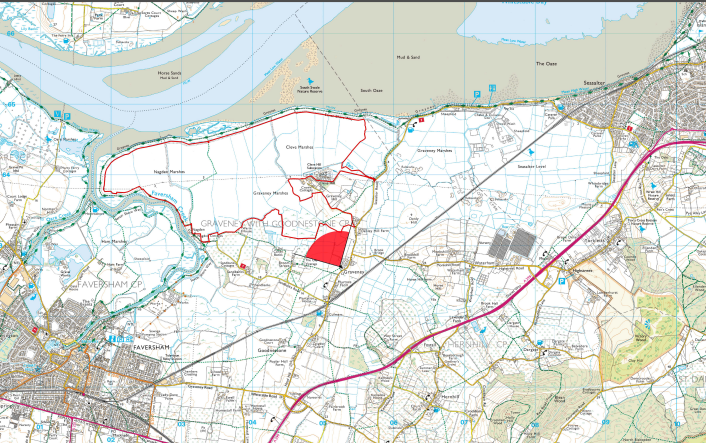


Volume 4 Technical Appendix A11.3 Cultural Heritage - **Figure: 6a**
Public Right of Way (ZR490) in proximity to All Saints Church

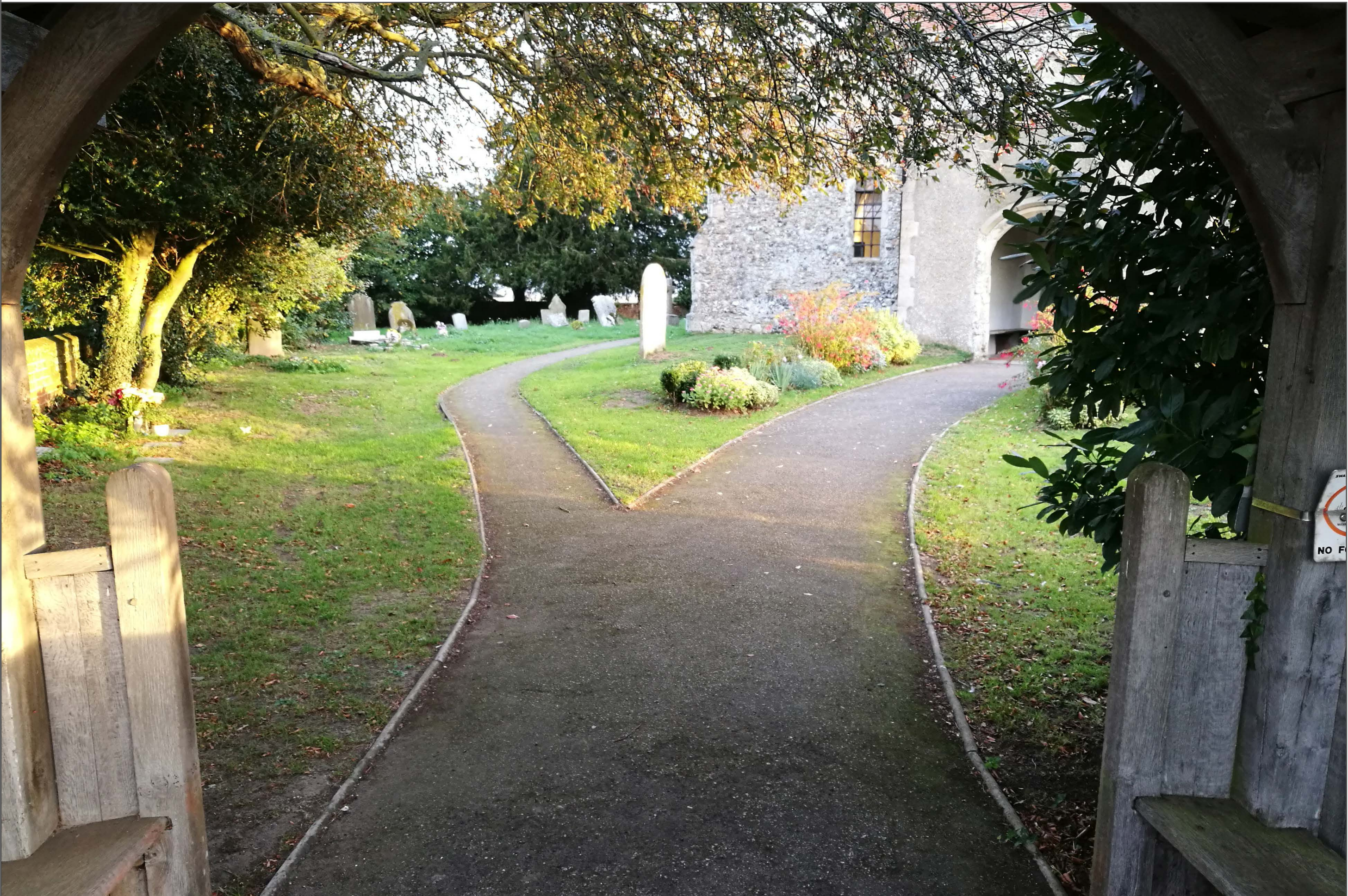


OS reference:	605222 162685	Horizontal field of view:	90°	Camera:	Nikon D3
Approximate AOD:	11m AOD	Principal distance:	500mm	Lens:	50mm f1.8D
Direction of view:	323.84°	Paper size:	841 x 297 mm	Camera height:	1.6m
Distance to CLSA:	425m	Correct printed image size:	820 x 170 mm	Date and time:	07/02/2018 13:26

"CLSA" - Core Landscape Study Area



Volume 4 Technical Appendix A11.3 Cultural Heritage - **Figure: 6b**
Public Right of Way (ZR490) in proximity to All Saints Church



OS reference:	605271 162653	Principal distance:	500mm	Camera height:	1.6m
Approximate AOD:	12m AOD	Paper size:	841 x 297 mm	Date and time:	19/09/2018 07:05
Direction of view:	340.43°	Correct printed image size:	385 x 256 mm		
Distance to CLSA:	589m				

"CLSA" - Core Landscape Study Area

